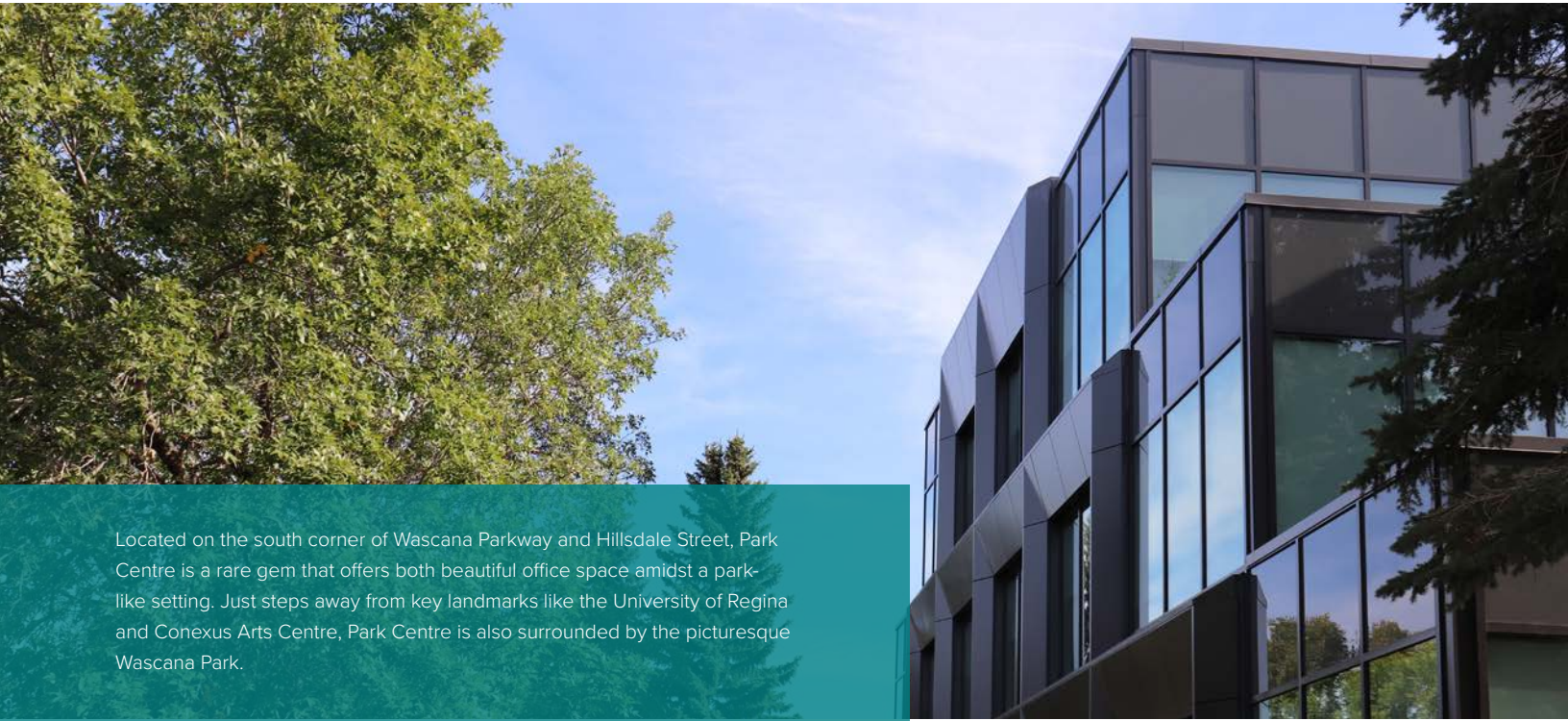


PARK CENTRE

1230 BLACKFOOT DR. | REGINA, SK



Located on the south corner of Wascana Parkway and Hillsdale Street, Park Centre is a rare gem that offers both beautiful office space amidst a park-like setting. Just steps away from key landmarks like the University of Regina and Conexus Arts Centre, Park Centre is also surrounded by the picturesque Wascana Park.

Park Centre has undergone extensive renovations which include: new exterior cladding, windows, upgraded LED lights throughout, new blinds. The building lobby and elevator cab underwent a refresh and modernization. Bathrooms and shower room in the building have been fully renovated. The underground parkade received major upgrades: new ramp, epoxy coating, paint, and LED lighting. At grade parking has upgraded parking pedestals and LED lights. The property has also been re-landscaped.

BUILDING HIGHLIGHTS

- Located on the south corner of the intersection of Wascana Parkway and Hillsdale Street.
- Flanked on the North and West by Regina's beautiful Wascana Park.
- Three storey, 53,330 square foot high-end first-class suburban office building
- Atrium and Terrace design provide a peaceful atmosphere in a park-like setting.
- Underground parking, surface parking, and designated areas for customer parking.
- Major tenants include: TD Greystone Asset Management, Connor Clark and Lunn Private Capital.

AVAILABLE SPACE

SUITE 190

3,419 SQUARE FEET

RENTAL RATE |
NEGOTIABLE

OP COSTS & PROPERTY TAXES |
\$19.73 PSF PER ANNUM

CHANTAL BLAISDELL

LEASING MANAGER, HARVARD DEVELOPMENTS

T | 306.777.0641 E | cblaisdell@harvard.ca

PARK CENTRE

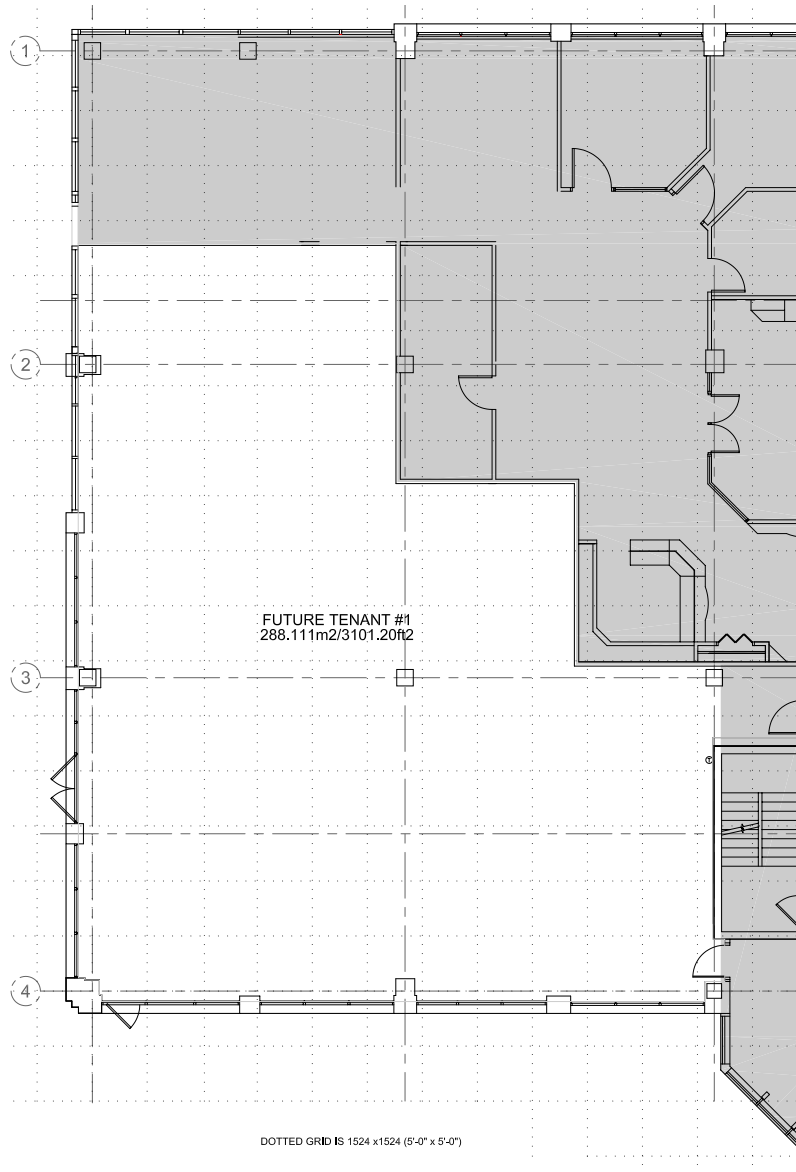
1230 BLACKFOOT DR. | REGINA, SK

SUITE 190

3,419

SQUARE FEET

CONCEPT FLOOR PLAN



1
A1-1

MAIN FLOOR KEY PLAN
SCALE: 1:200

CHANTAL BLAISDELL

LEASING MANAGER, HARVARD DEVELOPMENTS

T | 306.777.0641

E | cblaisdell@harvard.ca